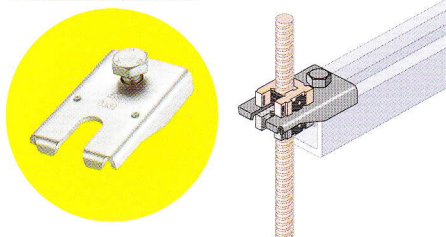
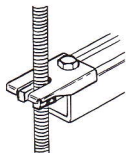


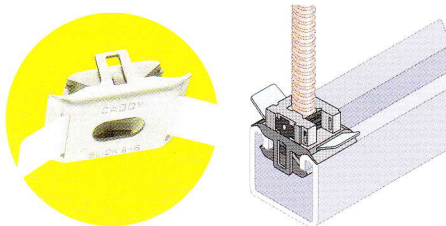
## ISSP



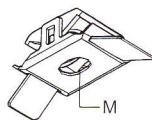
	Nº	P	
ISSP	190800	1	50
ISSP M6 (+ISN)	190810	1	24
ISSP M8 (+ISN)	190820	1	24
ISSP M10 (+ISN)	190830	1	24



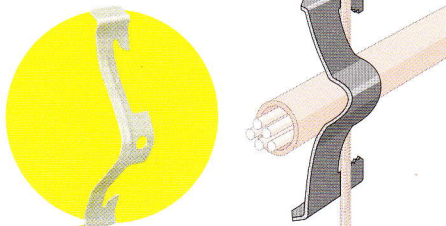
## CADDY® SLICK STRUT NUT



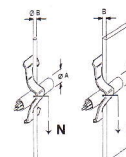
	Nº	M	P	
SLICKM6	174460	M6	7	100
SLICKM8	174340	M8	7	100
SLICKM10	174350	M10	7	100
SLICKM12	174550	M12	7	100



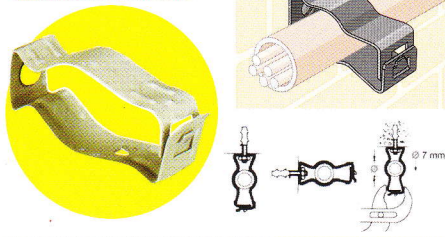
## K CLIPS



	Nº	mm	mm	P	
KX	170870	5-10	4-8	7	100
K8	170660	14-18	4-6.5	7	100 220
K12	170670	19-25	4-6.5	7	100 220
K16	170680	25-32	4-6.5	7	100 220
K20	170690	35-44	4-6.5	7	100 220

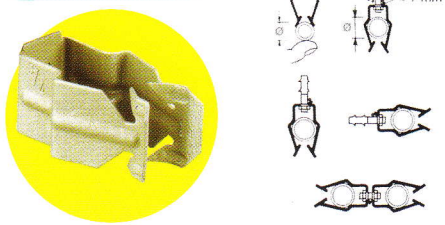


## M-CLIPS



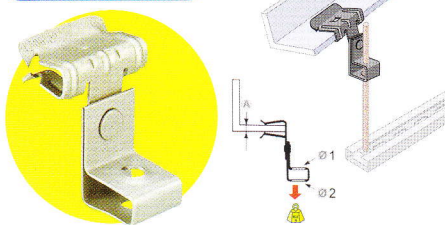
	Nº	mm	P	
6M	170790	14-18	7	100
812M	177130	18-30	7	100
16M	170100	30-35	7	100
20M	170110	35-42	7	100
24M	170120	42-50	7	100
32M	170130	50-60	7	50

## P-CLIPS



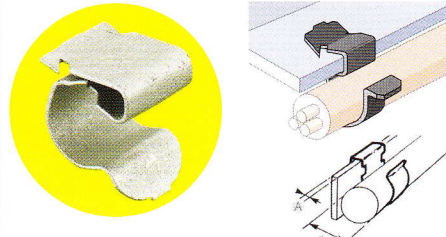
	Nº	mm	P	
8P (1)	171130	18-22	7	100
12P (1)	171150	22-30	7	100
16P (1)	171170	30-35	7	100

## H-Ti/T



	Nº	mm	Ø1	Ø2	P	
M6Ti4	2-3	M6	7	7	100	700
M6Ti24	3-8	M6	7	7	100	900
M6Ti58	8-14	M6	7	7	100	900
M6Ti912	14-20	M6	7	7	100	900
M8Ti4	2-3	M8	8.5	7	100	700
M8Ti24	3-8	M8	8.5	7	100	900
M8Ti58	8-14	M8	8.5	7	100	900
M8Ti912	14-20	M8	8.5	7	100	900
M10Ti4	2-3	M10	11	7	100	700
M10Ti24	3-8	M10	11	7	100	900
M10Ti58	8-14	M10	11	7	100	900
M10Ti912	14-20	M10	11	7	100	900
6Ti4	2-3	3/8 bsw*	11	7	100	700
6Ti24	3-8	3/8 bsw*	11	7	100	900
6Ti58	8-14	3/8 bsw*	11	7	100	900
6Ti912	14-20	3/8 bsw*	11	7	100	900
6T4	2-3	11	11	7	100	700
6T24	3-8	11	11	7	100	900
6T58	8-14	11	11	7	100	900
6T912	14-20	11	11	7	100	900

## SC RANGE



	Nº	A mm	mm	P	
24SC67	187510	1-4	6-7	(1) 7	100
24SC78	187710	1-4	7-8	(1) 7	100
24SC89	187530	1-4	8-9	(1) 7	100
24SC910	187750	1-4	9-10	(1) 7	100
24SC1011	187550	1-4	10-11	(1) 7	100
24SC1214	187570	1-4	12-14	(1) 7	100
24SC1518	187590	1-4	15-18	(1) 7	100
24SC1924	187610	1-4	19-24	(1) 7	100
24SC2530	187630	1-4	25-32	(1) 7	100

47SC67	187500	4-7	6-7	(1) 7	100
47SC78	187720	4-7	7-8	(1) 7	100
47SC89	187520	4-7	8-9	(1) 7	100
47SC910	187760	4-7	9-10	(1) 7	100
47SC1011	187540	4-7	10-11	(1) 7	100
47SC1214	187560	4-7	12-14	(1) 7	100
47SC1518	187580	4-7	15-18	(1) 7	100
47SC1924	187600	4-7	19-24	(1) 7	100
47SC2530	187620	4-7	25-32	(1) 7	100

812SC67	187640	8-12	6-7	(1) 7	100
812SC78	187730	8-12	7-8	(1) 7	100
812SC89	187650	8-12	8-9	(1) 7	100
812SC910	187770	8-12	9-10	(1) 7	100
812SC1011	187660	8-12	10-11	(1) 7	100
812SC1214	187670	8-12	12-14	(1) 7	100
812SC1518	187680	8-12	15-18	(1) 7	100
812SC1924	187690	8-12	19-24	(1) 7	100
812SC2530	187700	8-12	25-32	(1) 7	100

## SYMBOLS

### P CORROSION PROTECTION

- |  |                         |
|--|-------------------------|
| 1 Electrolytic Zinc Plated Chromate Dipped | 3 Hot Dipped Galvanised |
| 2 Stainless Steel                          | 7 CADDY® COAT           |

### LOAD RATING (Kg)

- Static Load
- Ultimate Load

\* Load ratings in this brochure are only applicable if the load bearing capacity of the supporting element (i.e. beam, purlin, angle etc) is adequate.

Now Available From:

ERICO products shall be installed and used only as indicated in ERICO's product instruction sheets and training materials. Instruction sheets are available at [www.erico.com](http://www.erico.com) and from your ERICO customer service representative. Improper installation, misuse, misapplication or other failure to completely follow ERICO's instructions and warnings may cause product malfunction, property damage, serious bodily injury and death.

Copyright ©2007 ERICO International Corporation. All rights reserved.  
CADDY, CADWELD, CRITEC, ERICO, ERIFLEX, ERITECH, and LENTON are registered trademarks of ERICO International Corporation.

ERICO Australia  
Phone: 1800 263 508  
[www.erico.com](http://www.erico.com)

ERICO Singapore  
Phone: (65) 6268 3433

**ERICO®**

F598LT07ENAS 0053.5M7